



Phoenix Artists Guild

VOLUME 56

MARCH 2013



President's Message

What a wonderful experience it was for me and several of our members to indulge in some plein air painting. First at Encanto Park and then at South Mountain Park. The weather was terrific both days and we enjoyed a picnic and getting to know each other a little better. We learn and

encourage each other and have a great time at any group event, so please consider joining in on the next one. This is just one example of activity we strive for member camaraderie.

Thank you for filling out and returning the surveys. It will help PAG grow in the direction most acceptable to most members. All your comments and suggestions are taken to heart and we will follow through with as many as possible.

Welcome Shannon Smith and Samuel Whitman, two new members to PAG. We hope we fill your every expectation from our Art Guild.

Reminders:

- * Glendale Adult Center Art pick-up - March 4 @ noon.
- * Consider participating in Beatitudes Spring Exhibit and Sale Event. April 12 through April 28.
- * Contact Jeannette Sprague to sign up for monthly art display.
- * Contact Dr. Carl for any questions relating to Az Art Alliance.
- * Please use Suggestion Box at general meetings to let us know what's on your mind.
- * Index cards are available at general meetings for sketches for newsletter- sketch and give to Bets.
- * George needs two more volunteers to help set up and break down at general meetings. Contact George. Stay healthy and happy!

Sincerely
PAG President

Carmen Timm

"Into The Woods"

Illustration for backdrop of a play
By Sandra Zally



**Critique at 5:30, Business meeting 6:30, Monthly Demonstrator 7:15, Refreshments
Meetings are the 4th Monday each month - Guests are Welcome**

website: <http://phoenixartistsguild.com> newsletter: <http://phoenixartistsguild.com/news/htm>



Denise Landis

Denise Landis says that focusing on musical rhythms helps steady her for dabbing as a pointillist. "Transforming my white canvas into the playground for an imagery-induced trance is my objective. The painting process of dabbing and daubing is actually simple and can seem mundane or monotonous to a viewer. However, a musical beat keeps me on task to create uniform marks with each stroke as I am happily at work.

Dot- dot- dot- dot- dot--Heaven.

It becomes hypnotizing. I can paint for hours without stepping back to really see what it is I am painting. However, pointillism art also requires an eye for specific color theory, order and placement. Therefore, I practice seeing the world in complimentary colors wherever I go.

Red and green, yellow and violet, orange and blue.

Push- push- push- push- push... My homework.

These actions captivate my audience with wonder and encourage them to ask the question "How?"

Dare I tell?

**ART IS GOOD FOR YOU
ME, AND THE WORLD!**

Visit her email for her many Exhibits and Credits
landis@landisworks.com

Exhibits 2012 - January - April

Elvis Art - Elvis Presley Memorial Chapel,
Supersition Mountain Museum, Apache Junction
Phoenix Center For The Arts

"Emerging Artists -Redux" - Dec 31 - January 7

Publications

Xanadu Art Catalogue, Xanadu Gallery - Spring 2012

American Art Collector - Alcove Books, 2011

Southwest Art Magazine ad for Contemporary Fine
Art International, 2011 - 2012

AZ Consortium of the Arts 2008 - 2012



- * Nobody cares if you can't dance well,
Just get up and dance.
- * Never put both feet in your mouth at the
same time, because then you won't have a
leg to stand on.
- * Always keep your words soft and sweet,
just in case you have to eat them.
- * Sometimes what you have is better than
what you dream of.

Member Tribute

Suzi Q. Cooper

Suzi Q. Cooper has been passionately involved in art her entire life. As a tot, she loved coloring with her crans', or making her own paper dolls. She drew, painted or sculpted all through school. She took every class offered and painted huge holiday murals on several school windows...(she attended 12!) Quite often she did mother animals with five babies. Self prophecy? She took home many ribbons!

Her dream was to become a Fashion Designer and she studied at ASU, but alas, she couldn't sew! Still she managed to become fairly proficient in Fashion Illustration and later in making wearable or functional art, such as: paper or leather jewelry, hand painted clothing, glasses, boxes, stools, and so forth.

As a single mother of five, she made her living for years as an Interior Designer. This was amented by playing piano as well as selling her art creations. Later in life, she completed 700 hours at AI Collins , in Graphic Design. She has attended or TAUGHT classes at Phoenix College, Yavapai College in Prescott, Washington and Devonshire Adult Centers. Former member of "One OF A Kind" art club in Tucson, where they displayed paintings, mostly in oil. And she is currently doing pet portraits in watercolor, pastels or acrylics.

IIAA, and ASID(Interior Designers) : Phoenix, and Palm Desert, CA

Firebird Artists, Phoenix Artists Guild,

By

Bette Lou Tobin



REFRESHMENTS

Cookies :	Ruth Isham Ann Higgins
Cheese/Crackers :	Clarice McIlvain Eva Maller
Chips/Dip :	Silvia Roberts Carolyn Tolliver
Veggies :	Victoria Lansing
Fruit :	Sheila Bellinger

Creative Corner

"Painting Skies"

Julie Frye

It's not always easy to know how to treat skies in terms of paint – a common mistake is to put on the paint for the sky much more flatly than elsewhere in the painting. A good rule of thumb is to use **RANDOM** brush strokes going in all directions and several different colors and values to suggest that we are looking at AIR!

Because of the tendency to regard the sky as a backdrop, many people do not realize that it is subject to the laws of perspective just as the land is. It helps to think of it as an inverted "soup bowl" over your head; the "rim is farther away than the center, so when you are painting clouds, they appear larger overhead than at the horizon. They also become less distinct in color and tonal contrast the farther away they are. (Aerial perspective) A sky that looks quite dark above your head will become paler and paler as it recedes from you.

Dramatic skies and interesting cloud formations can be used in a compositional way to add interest to a landscape. However, if you have a complicated sky, keep the land area simple so they don't compete for interest. (If you divide your canvas into 2/3 sky, 1/3 land it becomes a "sky scape" so feature it and minimize detail and contrast in the smaller land portion. – Make sense?)

The colors of clouds are often quite unexpected, as is their tonal range, so careful observation is necessary; so here are a few general guidelines. The color of a cloud of course depends on the light, its intensity AND direction. At noon, the sun is high, therefore there will be little variety of color, and the tops will be almost pure white. A low sun (morning or evening) will add more color to not only the shadows of your cloud but also the lights.

Make careful observations of skies and write down your impressions in a notebook. A quick sketch of the general shapes you see and a notation of colors will be most helpful when you compose your next landscape.

WE HAVE DECIDED TO SCHEDULE THE GLENDALE ADULT CENTER SHOW AGAIN NEXT YEAR, SINCE WE RECEIVED PUBLICITY FROM THE YOUTUBE SEGMENT AND SINCE THEY KEPT OUR EXHIBIT UP UNTIL MARCH THIS YEAR.

Happy Notes

Jaxine Cummins sold 3 paintings from the Alliance Show. **Jo Allenbach** sold 2 paintings at the Glendale Art Council Show at the Packing Shed. "Misty Morning" 36x48 & "Arrival" 30x48, both in acrylic.

Sheila Bellinger sold a small 8x10 oil painting, "The Lecture", of 3 penguins and is thrilled that penguins were the mascot of the old school for the man that bought it. They were also in the Glendale Arts Council Show.

Jeanette Sprague sold two from the same show, "Arizona Country" and "Montana Sky Ranch" both in oil.

Pat Gellenbeck sold her "Spring Surprise" from the Packing Shed also. It is 50x50 and done in acrylic.

Dr. Carl Hoelle sold his two paintings "Coastal Icon", and "Pacific Evening" which was a great surprise, because he said they were not juried into the Glendale Council Show.

That's **eight** paintings out of one show. Add in **Jaxine's** 3 from AAA and that is 11 paintings of PAG members sold in one month. Has to be a record. Congratulations to all of you!

Ginny Wordsman and **Elaine Waters** showed a display of their beautiful artwork in the Lobby of the Chapel for the February meeting.

George Nelson would appreciate some help at the ways and Means table for March.

Jean Klein and **Mickey Crawford** were both winners of the \$25 gift certificate from Arizona Art Supply.

Ginny Wordsman and **Jeanette Sprague** were the winners of the Liquitex gift package.

Cory Couturier offered to create a PAG facebook website.

Jeanette Sprague is the person to contact if you are interested in joining in the "Paint Outs". See Directory for her phone number or email.

Chuck Cummins conducted a lesson on getting in and moving around on our website. (Check page 5.)

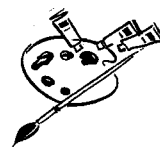
The 50/50 winner got away before I got her name.

P,S, March Board Meeting will be in the room we pick up our art from Glendale Adult Center on March 4.

Phoenix Center For The Arts.

Offers classes and events for adults, youth, and families. Classes include:

Drawing, Painting, Sculpture, Cartooning, Claymation
Parent & Tot Messy art
Piano, Guitar, and Voice
Jazz, Dance, Theatre
Ceramics, Printmaking



Phone: 602-254-3100

phoenixcenterforthearts.org

1202 N. 3rd St

Phoenix, AZ 85006

Arizona Art Alliance

Gallery at the Pavilions Talking Stick
9011 E. Indian Bend Rd., Suite E-1

ARIZONA ART ALLIANCE

In addition to the major changes reported in the February Newsletter, there are further changes in the Gallery, Artists Gift Shop, and the Jurying opportunities:

GALLERY

* Minimum charge per artwork piece has been raised to \$175.

* Exceptions to this are "miniature" pieces (e.g., v 6x8, 8x10, 9x12); minimum price is \$75 per piece.

ARTISTS GIFT SHOP

* The maximum charge per item has been raised to \$175.

* Remaining is a no minimum charge per item.

* Artists putting items in the Gift Shop will need to volunteer 1 day per month.

Jurying

* Artists seeking juried status may apply in more than one medium on the application form and on the CD (e.g., oil, watercolor, mixed media), but not combining 2-D work and 3-D work.

* Prior to the Jury Director's submitting a CD to the independent jurors, the CD's will be numbered and names omitted for artist security and anonymity.

Although several months away yet, it's a good idea to begin thinking about whether you might wish to exhibit a piece of your artwork in the Phoenix Artists Guild 2-week show in the Alliance Fine Art Gallery, including both Alliance juried and nonjuried artists, all compliments of the Arizona Art Alliance for the Phoenix Artists Guild's membership in the Alliance. The only charge would be a 40% contribution for any piece sold.

If you have any question regarding anything Alliance related email me carlart@cox.net, or call 602-274-1699.

Dr. Carl Hoelle
Alliance Rep.

Note From Editor

I must ask all who submit articles for the newsletter - please do it by the deadline! The 20th of preceding month...PLEASE!

March Birthdays



Jule Andrews 3/6
Suzi Q. Cooper 3/20
Glen Guyette 3/19
Jean Klein 3/5
George Nelson 3/31

Artist of the Month
for February
Jane Brown

Why We Love Children

I was driving with my three young children one warm summer evening when a woman in the convertible ahead of us stood up and waved. She was stark naked! As I was reeling from the shock, I heard my 5-year-old shout from the back seat, "Mom, that lady isn't wearing a seat belt!"

A little girl had just finished her first week of school. 'I'm just wasting my time,' she said to her mother. 'I can't read, I can't write, and they won't let me talk!'

A little boy opened the big family Bible. He was fascinated as he fingered through the old pages. Suddenly, something fell out of the Bible. He picked up the object and saw it was an old leaf that had been pressed in the pages. 'Mama look what I found,' he cried. 'What do you have, dear?' With astonishment, he said, 'I think it's Adam's underwear!'



Ways & Means

George Nelson say the Ways and Means table is a good source, (small but steady) of income for the Guild. We say it is a wonderful source of beautiful art books used (slightly), art materials at really bargain prices, magazines relating to art, picture frames, paints. You never know what you will find on that ever-changing table. It is always open for more slightly used art supplies, so go through the supplies that you are not using, maybe someone else could really put what you don't need to better use.

George says: Your donations are greatly appreciated and put a few coins in our piggy bank.

Linda David was George's unofficial helper for Feb.

And always remember to sign in at the door for your raffle ticket that is worth \$25.00 at Arizona Art Supply. (If your ticket is drawn.)

George Nelson - 602-246-88373

Arizona Art Supply has donated additional gift certificates for the PAG Beatitudes and Glendale Adult Center Shows to be awarded to 1st Place winners.

Please let them know we appreciate their gifts.

MESSAGE FROM CHUCK

Get "Linked" on the PAG Website

Promote YOU AND YOUR ART FOR MORE WORLDWIDE VISIBILITY

1. Be a member of Phoenix Artists Guild.
2. Pay just \$25 for a Full Year Link. Send check to Elaine Waters, PAG Treasurer; 2330 W. Mandalay Ln. Phx., AZ 85023.
3. Send a JPEG image; (prepare-crop-size, and save it as a 300+dpi JPG image) include name of piece, size, media used; (pricing optional, have them contact YOU, so you may negotiate!)
4. Email to Chuck Cummins; Chuckc@lincum.com your JPEG image; contact information, name of organization(s) to which you belong, and your contact info, (name, email, and website addresses), we do not recommend including your phone or home address.
5. If you have your own website, please link BACK to <http://www.phoenixartistsguild.com/Links.htm>. This makes links more favorable to Google and other search engines.

Chuck Cummins conducted a lesson on getting in and moving around on our website. If you view from a library, or other internet-enable source:

- * have an email address for log-on
- * If needed, use a Google Gmail account
- * <http://phoenixartistsguild.com>
- * Connect and Save in your Favorite, for quick finds later
- * Navigation

ONGOING PROJECT

John Mansour says he really appreciates all the generous donations the Guild members have contributed to the food drive.

Powdered milk, cereal, canned beans, soups, tuna, raisins, crackers, pasta, or anything that keeps well is welcome. The church is appreciative of our helping out on this.

Utrecht
Art Supplies

938 E. University Drive
Tempe, AZ 85281
(602) 246-8800
store@utrecht.com

We've got everything you need for class, and more!

FREE LOCAL DELIVERY!
please call our store for details
(602) 446-9800

Lowest prices in town... GUARANTEED!



Arizona Art Supply

The Largest Fine Art Supply Retailer in the Southwest

Arizona Art Supply serving artists since 1951

Proud Supporter of Phoenix Artists Guild

**Phoenix Artists Guild members
Receive 20% OFF**

Discount does not apply to internet orders or sale items.

PHOENIX • 4025 N. 16th Street • Phoenix, AZ 85016 • (602) 264-9514 • Fax (602) 264-1009
 SCOTTSDALE • 10869 N. Scottsdale Road • Scottsdale, AZ 85254 • (480) 948-0802
 SUN CITY • 10659 W. Grand Avenue • Sun City, AZ 85351 • (623) 974-8200
 TEMPE • 1628 E. Southern • Tempe, AZ 85282 • (480) 775-4102
 TUCSON • 4343 N. Oracle Road • Tucson, AZ 85705 • (520) 388-5555 • Fax (520) 388-4806

Visit Us Online At:

www.arizonaartsupply.com

Phoenix:
4025 N. 16th St.
Phoenix, AZ 85016

Sun City:
10659 W. Grand Ave.
Sun City, AZ 85351

Tempe:
1628 E. Southern
Tempe, AZ 85282

Scottsdale:
10869 N. Scottsdale Rd.
Suite 105
Scottsdale, AZ 85254

MEETING NOTICE

March 25, 2013

BEATITUDES CHURCH
555 W. GLENDALE AVE
BRITT CHAPEL

DEMONSTRATOR: Denise Landis - Pointillism
Time: 5:30 Critique For Members
6:30 - General Meeting



Website address: <http://phoenixartistsguild.com>

For the newsletter: <http://phoenixartistsguild.com/news/htm>

Newsletters are PDF-formats - download free Adobe Reader, <http://get.adobe.com/reader/>

Remember to submit your pen and ink sketches to be featured in the newsletter.

Send news, updates and corrections to: Bets Doss email: betsdoss@aol.com

PLEASE PRINT NAMES, ADDRESSES, EMAILS CLEARLY!

The Newsletter needs QUALITY pen and ink sketches. We have talented, gifted artists in PAG and we need to show them off. Newsletter sketches reproduce best done in pen and black ink. The size should be approximately 5 1/2" by 3". They can be proportionally enlarged or reduced to fit the space better. Please participate in this.

UPCOMING SHOWS

Glendale Adult Center:

"Winter Wonderland of Fine Art"

Show Dates continuing until :

March 3, 2013

Release of accepted entries:

March 4, from noon until 1:00

Beatitudes Church Exhibit

Church of the Beatitudes

555 W. Glendale Ave.

Art Delivery: Thurs. April 11, 10 AM - noon

Judging by Alan Arne

Show Dates: Friday, April 12, 2013 -

Sunday, April 28, 2013

Show Hours: 10 am - 5 pm, Mon. - Sun.

Application Due: Mon., March 25, 2013

Set-Up: Thursday, April 11, 2013

Art Reception: Friday, April 12, 6-8 pm

Art Release: Mon. April 29, 10 AM - noon

Maricopa County Fair

Fine Art & Photography Show

April 10 - to April 14, 2013

Deadline for Entry form: March 1, 2013

Entry Fee: is \$4.00 per entry if entry form is submitted by Sunday, April 7th, 12 - 3 pm.

Art Receiving: Sunday April 7, 2013, 12 - 3 pm

Artists may enter up to 5 works of art. Enter by mail

or online at www.maricopacountyfair.org. You will

find the Exhibitor Handbook, Fine Art information

and entry forms. If interested in demonstrating or

volunteering as hosts, call or email Sandra Zally

at: zallysworld@yahoo.com

DIRECTORY UPDATE

Cory Couturier

6105 N. 59th Ave. Apt # 119

Glendale, AZ. 85301

Paintings for shows should be properly framed. There are directions for framing on page 37 in the Guild's Directory.

Carmen Timm suggested that a demonstration for preparation and framing of paintings for shows could be shown at a regular meeting. Jaxine Cummins offered to instruct on how to apply a dust cover for the back.

Deadline for newsletter articles is the 20th of each preceding month.

Please comply