

Phoenix Artists Guild

VOLUME 45

JANUARY 2012

President's Message

Happy New Year! Welcome to January 2012!

The end of another year gives us an opportunity to look back and give thanks to all the wonderful happenings we were a part of in 2011. We give thanks to the past and welcome the future with excitement!

Welcome 2012! The Phoenix Artists Guild enters its twenty-eighth year as a catalyst for promoting the appreciation of art in all forms. Artists are encouraged to promote all areas of artistic talents by encouraging them to give of their skills, time, and energy. All of this while making lifelong friends and having fun!

The PAG Holiday Meeting on December 12th was a big success. Attendance was outstanding. The food, games, raffle, people, and entertainment were great! A special thanks to friends and family that joined the

festivities. The food drive collected more than was anticipated. Thank you to those that opened up your hearts to help those in need. What a successful event!

PAG has several exciting shows coming up in the next few months. Please check out the scheduled art exhibits delineated in your PAG Directory for details or visit our website at www.phoenixartistsguild.com.

The next few months promise to be full of opportunities for your artwork to get the recognition it deserves. Many of our PAG artists received this well deserved recognition at the Arizona Art Alliance Holiday Show this December. Congratulations to all PAG members who took advantage of showing their art in the AZ. Alliance Gallery. PAG was very well represented!

Thank you all PAG members! "I look forward to seeing all (continued on Page 2)



Sketch By
Larry Andrews

Critique at 6:00, Business meeting 6:30, Monthly Demonstrator, Refreshments Meetings are the 4th Monday each month - Guests are welcome

website: <http://phoenixartistsguild.com>

Kelley Smith

Kelley Smith is a third generation Arizona native. After raising five very creative daughters, Kelley attended Scottsdale Community College where she received numerous scholarships, including the Helen Bychinsky Artist of Promise Award. Her essay on art education won a partially funded trip to Italy and Greece. The college then sponsored her first one woman show. Kelley proceeded to attend Arizona State University to continue her art training.

At that same time, Kelley was honored to receive the Scottsdale Artists League Scholarship for emerging artists, which started her involvement in art organizations in the Valley. Kelley helped found and is on the board of the Arizona Art Alliance and was instrumental in the formation of the art classes taught to incarcerated youth at the Southwest Juvenile Corrections Complex. For this service, she was awarded as a nominee for Arts in Education for the 25th annual Arizona Governor's Art Awards.

In past years, Kelley has been on the boards for the Arizona Pastel Association, Arizona Artists Guild and Scottsdale Artist League. Kelley's art has hung in several galleries in Arizona and New Mexico. She participated in First Fridays in Downtown Phoenix, The Celebration of Fine Art and The Sonoran Art League's Hidden in the Hills shows.

Currently, Kelley continues to paint for commission from her studio at home and teaches private and group classes on drawing and painting with oils and pastels. She continues to volunteer teaching art for youth group and elementary schools in the greater Phoenix, Arizona valley in addition to working as an event designer and jewelry artist.

Artist Statement:

"With half of the world full of creepy people doing even creepier things, I purposely choose to concentrate on the other half. There are a tremendous amount of good people and things even in this troubled world of today. I may be too old to sound "Pollyanna-ish", but choosing to see the positive is how I stay sane. I continue to find excitement in painting these good things with slightly pushed colors, and the sheer act of placing brush strokes onto canvas to create shapes and textures is exhilarating for me. I receive a tremendous amount of joy interpreting the beautiful things in my life, even if it is just by painting a piece of fruit. It's as simple as that."

Contact: 623-242-7937

Kelleysmithart@hotmail.com

www.kelleysmithart.blogspot.com

www.lifeandartwithglammarafabulous.blogspot.com

14326 W. Christy Dr.

Surprise, Az 85379

Member Tribute

Bets Doss

Bets Doss was introduced to art classes at the University of Oregon. She was working part time at the University and at a photography shop on campus. She married and moved to San Francisco where she was hired as a fashion model at Ransohoffs. When son Rick decided to make an appearance they moved back to Springfield, Oregon. Rick was followed 14 months later by brother Ron. Raising her two sons was top priority for the next 10 years.

Eventually they moved to Phoenix and she got a job as assistant to Don Ruffin, the art director at KPHO, Channel 5. He was just starting to teach classes and be shown in galleries. He renewed her interest in art and she took classes from him. While being his assistant at the studio, he also asked her to assist him on 3 large 12 ft by 30 ft murals. That was a wonderful experience.

Later, she took a class in Technical Illustration at Glendale Community College and after working in that field a few years was hired as the first female Technical Illustrator at Motorola working with 13 men. Still working full time, she enrolled in evening classes in drawing and painting from excellent teachers at GCC. Namely, Darlene Goto and Bill Ahrendt.

After retiring, she performed for a few years with the Sundance Ranglers, a Western dance troupe. Dancing at senior centers, care homes and County and State Fairs.

Now a member of Arizona Artists Guild, she is re-connecting with her art interests, working in oils, watercolor, pastel and conte. She does their monthly newsletter and loves it.

Being with others who enjoy the things you do and learning from them and the monthly critiques and showing with others in the yearly exhibits is a most fun and satisfying experience.

(Presidents message continued from page 1)

of you at our January meeting..Happy New Year"
"Get ready to have some fun! Take brush or tool in hand, and go for it! Remember...don't strive for perfection, just for fun!" "true change takes place in the imagination"

PAG President

Maryanne Noli



Creative Corner

By Elaine Waters

CLEAN UP YOUR PAINTINGS

Every artist should critique their own work. I have been doing a lot of critiquing of my own oil paintings during the last few months and have become aware of a weakness that keeps popping up more times than I would like to admit.

WEAK, SLOPPY, MESSY EDGES

In all mediums of painting, the artist can use hard edges, soft edges, and broken edges and each has it's purpose. But, sloppy, messy edges will only weaken an otherwise strong painting.

So, how do we oil painters avoid or fix this problem? The easiest way is to avoid the problem in the first place by painting with juicy paint using a well-loaded good brush. You should use a lot of paint and your brush should be pliable, not stiff from bad cleaning. Decisiveness in doing your brushwork is also important. Make your strokes boldly. Don't be in such a rush to finish that you neglect the real finishing - clean work.

Recently, I brought home several paintings from two different exhibits. After looking at them carefully, I realized that two of the paintings really needed some "cleaning up". One painting needed just a tiny bit of clean up work, but the other needed extensive work. Having finished them...I wonder why I didn't see the problems before.

If you have finished paintings which are good, but seem to lack the punch that you are seeking, take them down from your walls or out from your closets and examine them carefully. If poorly painted, weak, messy edges are ruining one of your paintings...put it back on your easel and clean it up. You will learn so much by doing the clean up work...and each of your paintings deserves to be presented at its very best.

YOU KNOW IT'S GOING TO BE A BAD Day WHEN
You put your bra on backwards and it fits better
Your birthday cake collapses from the weight of
the candles
You want to put on the clothes you wore home
from last night's party & there aren't any
You wake up to discover that your waterbed
broke & realize you don't have a waterbed
Your twin sister forgets your birthday

Arizona Art Alliance

Dr. Carl Hoelle

The Arizona Art Alliance

10810 North Tatum Blvd. #102-264

Phoenix, AZ 85028

Gallery at the Pavilions Talking Stick

9011 E. Indian Bend Rd., Suite E-1

Scottsdale, Arizona

HOLLIDAY SHOW. We had a record number of participants (15 artists) in this wonderful exhibit that closed on December 23rd. We also had 3 prize entries: **Jaxine Cummins:** 1st Place in acrylics. (shown with CEXII) , **Julie Frye:** 1st Place in oils, and **George Nelson:** 1st Place in wood. Congratulations to all.

UPCOMING SHOWS. The Alliance Gallery Show for juried artists is entitled "Take Art to Heart, Go Red!" The next jurying cycle deadline is January 30, 2012. Those artists juried in will be eligible to show in the **Gallery Spring Exhibit.**

The Gallery is inviting juried artists to demonstrate (inside or outside the Gallery) the weekends of **January 20-22 and January 27-29, 10 am to 5 pm.** If interested, contact **Kathleen Koneski** email at: joekathy@prodigy.net

to sign up for a space, date and time. Should anyone sell their demo they would need to give 30% of the sale to the Alliance. That is the only stipulation for participation.

Dr Carl reports that the gift shop sold over \$3,000.00 worth of handcrafted gifts.

Dr. Carl Hoelle
Alliance Rep



Refreshments for January furnished by:

Cheese/Crackers:	Sheila Bellinger
Chips/Dip	Sharon Elliot
Cookies :	Bets Doss
Veggie Tray:	Victoria Lansing
Fruit Tray	Annette Grosso



Happy Notes

PAC membership is now at 81. We are growing steadily. Welcome to 3 more new members for Nov./Dec.

Alice Okoneski is showing 2 paintings at ASU Gammage Theater starting until 01/03/12. along with 50 other paintings from the Scottsdale Artist League. She has begun an art circuit at Pita Restaurant Chain. Starting with the Scottsdale Fashion Square (food court). At a recent art show for her students at the Fellowship Square Home she sold 2 watercolors. She has been juried into a second medium (Mixed Media).

Jaxine Cummins sold 2 very large acrylic paintings at Hidden In The Hills. Plus another large acrylic painting titled "Grannie Smiths Apple" at the AAA Show.

Julie Frye sold her Christmas poinsettia painting, and also the "Best of Show" in the spring Beatitudes exhibit, titled "Antique Auto."

Thanks go out to **Jeannette Sprague** and **Catherine Mola** for the beautiful display of the Christmas Party potluck supper and to **Sheila Bellinger, Victoria Lansing** and **Jean Morgan** for the set-up and clean up before and after. And didn't the tables look gorgeous with **Carolyn Tolliver's** "Country Christmas" theme? And Jeannette wants to thank all who helped on clean up, and said everyone outdid themselves on the food. And of course the Gift Exchange was great fun. To top it off, entertainment by **Julie Frye's Sweet Adeline** group was absolutely the best.

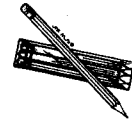
Jean Morgan was the winner of the Az Art Supply \$25.00 gift certificate.

BetteLou Tobin won the Ways & Means 50/50 draw.

The **Board** was delighted by the luncheon at Christo's Restorante which was a generous gift from Maryanne to her board. We thank her so much.



The happiest people don't necessarily have the best of everything. They make the best of everything they have.



LET'S FILL UP THE BOX!

We are providing art supplies for the **Phoenix Collegiate Academy** to go along with our art display panels we have donated. Phoenix Collegiate Academy is one of our outreach programs to help promote art education for children. Each of us just needs to buy a few art supplies for the box.

*Crayons *scissors *watercolors *colored paper *colored pencils *marking pens, etc.

One of the first things the school budget will cut is the art programs, so It will make a world of difference for the children to have some art experiences. It's exciting for us to watch the box fill up and know we will be bringing some creative pleasure to these young people. The wildly colored box will be displayed near the Ways & Means table.



Arizona Centennial

This might be fun to do. **The City of Glendale** is sponsoring a 2012 Plein Air Painting Event on Sat. Feb. 4, at 8:a.m. - 5 p.m. in historic downtown Glendale. This outdoor event is open to any artist, age 18 and older, who paints using the plein air technique in oil, watercolor, acrylic, or pastel.

Register the event day, 8 to 10:30 a.m. at the Promenade on Palmaire, 5835 W. Palmaire Ave. Artists must bring own materials and easels and register prior to starting to paint. For event rules and requirements, email jfleming@glendaleaz.com or mvahabzadeh@glendaleaz.com, or visit www.glendaleaz.com/arts. Judging will be held at the end of the event day. Award categories are purchase awards and will be accessioned into the city's permanent art collection.

(Historical significance within Glendale theme-\$1,000.00 award)

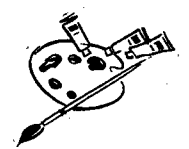
Best of Show- \$1,000.00 award

Second Place- \$700.00 award

Third Place-\$500.00 award

Honorable Mention- \$300.00 award

Presented by the City of Glendale Public Art Program in conjunction with Special Event and the Glendale Chocolate Affaire, Feb. 3-5.





Ways and Means

George Nelson says he sold 106 tickets for the Phoenix Art Museum membership. The raffle ticket for a yearly membership was won, but as of yet we don't know the winners name. But we will find out. He also has a lot of magazines at the Ways and Means table. Also remember to donate items that someone else can use. Your donations are greatly appreciated and put a few coins in our piggy bank.

And always remember to sign in at the door for your raffle ticket that is worth \$25.00 at Arizona Art Supply. won by

George Nelson - 602-246-8373

NEW PROJECT

We discussed a new project: donating cereal to needy families. bring a box of cereal every time you come to a meeting. It will be donated along with the church's donations. It doesn't cost much and will stretch a long way. So many families are homeless now and really in need. It doesn't have to be an expensive box, the cereals on the bottom shelf will do just fine.



BUY & SELL

If you have something to sell or want to buy an item, you can advertise it for 3 months at a very nominal cost. You get 4 lines in the column for \$5.00.

Julie Frye is in charge of managing this for the time being. See PAG Directory for phone, email or snail mail to contact her. This buy and sell ad is different from advertising in the newsletter to promote classes. The classes ads are \$15.00 for 3 months. Contact Julie Frye for this also.

News Flash From Dr. Carl

The Alliance Show, was a great success, both in the Gallery and Artists Gift Shop. The PAG was well represented and several member entries won 1st Place awards for their work.

It would be a fitting start for 2012 to continue that success with the upcoming Alliance exhibit. "Spring into Art." Show dates will be Mar. 8 to April 1, 2012. Panel side, floor and table spaces will remain at \$50.00 each. Four hours volunteer time per side or space will be required. If participating in this show, I will need to know how many sides, table and /or floor space you need (specify singles or doubles for panel sides which are 38" wide x 70" high) no later than Wednesday, January 18th. Preliminary counts go to the Show Director by Friday, January 20th.

The Artists Gift Shop will be also available to both juried and non-juried artists for this show whether or not displaying art in the Gallery. A review cost of \$5 will be needed on all initial contacts. The fee for space (approx. 2 ft square) will \$10 per space if not showing in the Gallery; there is no rental fee if you will be showing in the Gallery. Let me know this also by the 18th.

You can email me at carlart@cox.net, or drop me a note in the mail to Carl Hoelle, 6545 N. 1st place. Phx, 85012. I will be unavailable by phone between January 5th and the 16, but have a message machine if you call at 602-274-1699.

I may have more information re all of this for our general meeting on January 23rd.

Let's keep growing our participation in Alliance shows. The Gallery is beautiful and represents a wonderful opportunity to exhibit (and perhaps sell) our artwork. Also, the Gift Shop is a great way to exhibit and sell small items at affordable prices.

Dr. Carl
Alliance Rep.

A little old lady who had lost her marbles was running up and down the halls in a nursing home. As she walked, she would flip up the hem of her nightgown and say "Supersex."

She walked up to an elderly man in a wheelchair, flipping her gown at him, she said, "Supersex."

He sat silently for a moment or two and finally answered, "I'll take the soup."

January Birthdays

Irene Baumann Jan. 29
Corey Couturier Jan. 29
Linda/Steven David Jan. 10
Diane Gara Weiner Jan. 28
Pat Gellenbeck Jan. 24
Marilynb Miller Jan. 4
Paula Sandera Jan. 23
Carmen/Walt Timm Jan. 28



Mystery Member

Associate Member
A wizard negotiating the website
Is always willing
to lend a helping hand.



Artist of the Month
Nov/Dec
Julie Frye

Mystery Member
Nov./Dec.
George Nelson

Message From Chuck

Get "Linked" on the PAG Website

Promote YOU AND YOUR ART FOR
MORE WORLDWIDE VISIBILITY

1. Be a member of Phoenix Artists Guild.
2. Pay just \$25 for a Full Year link. Send check to Elaine Waters, PAG Treasurer; 2330 W. Mandalay Ln. Phoenix, AZ 85023.
3. Send a JPEG image; (prepare-crop-size, and save it as a 300+dpi JPG image). include name of piece, size, media used; (pricing optional, have them contact YOU, so you may negotiate!)
4. Email to Chuck Cummins; Chuckc@lincum.com your JPEG image; contact information; name of organization(s) to which you belong, and your contact info; (name, email, and website addresses); we do not recommend including your phone or home address.
5. If you have your own website, please link BACK to <http://www.phoenixartistsguild.com/Links.htm>. This makes links more favorable to Google and other search engines.

Utrecht
Art Supplies



930 E. University Drive
Tempe, AZ 85281
(480) 446-0800
store31@utrecht.com

**We've got everything
you need for class, and more**

FREE LOCAL DELIVERY!

please call our store for details
(480) 446-0800



Lowest prices in town...**GUARANTEED!**

AD'S FROM OUR SPONSORS

JULIE GILBERT POLLARD

classes & workshops • watercolor oil acrylic
623-849-2504

JulieGilbertPollard@cox.net - JulieGilbertPollard.com

- Scottsdale Artists' School (Jun 28 – Aug 2)
- Highland Valley Studios, Ramona, CA (Apr 29 – May 1)
- La Romita School of Art in Umbria, Italy (Jun 6 – 20)
- Dillman's Creative Arts Foundation in Wisconsin (Sep 18 – 23)
- More classes & workshops + details, listed on my website!

Brilliant Color – best seller North Light Book

Watercolor Unleashed DVDs from North Light Shop/ArtistsNetwork

Watercolor Unleashed! – self-published “chapter-at-a-time book”



PAINTERS' PLAYHOUSE

Tuesday, Wednesday, and Thursday Mornings

9:00 – 12 noon

Maxine James Studio

939 East Vermont Ave.

Phoenix, AZ 85014

602 279-4592

2 blocks south of Missouri, north of Camelback



Arizona Art Supply

The Largest Fine Art Supply Retailer in the Southwest

Arizona Art Supply serving artists since 1951

Proud Supporter of Phoenix Artists Guild

**Phoenix Artists Guild members
Receive 20% OFF**

Discount does not apply to internet orders or sale items.

PHOENIX • 4025 N. 16th Street • Phoenix, AZ 85016 • (602) 264-9514 • Fax (602) 264-1009

SCOTTSDALE • 10869 N. Scottsdale Road • Scottsdale, AZ 85254 • (480) 948-0802

SUN CITY • 10659 W. Grand Avenue • Sun City, AZ 85351 • (623) 974-8200

TEMPE • 1628 E. Southern • Tempe, AZ 85282 • (480) 775-4102

TUCSON • 4343 N. Oracle Road • Tucson, AZ 85705 • (520) 388-5555 • Fax (520) 388-4806

Visit Us Online At:

www.arizonaartsupply.com

Phoenix:

4025 N. 16th St.

Phoenix, AZ 85016

Sun City:

10659 W. Grand Ave.

Sun City, AZ 85351

Tempe:

1628 E. Southern

Tempe, AZ 85282

Scottsdale:

10869 N. Scottsdale Rd.

Suite 105

Scottsdale, AZ 85254

MEETING NOTICE
JANUARY, 23, 2012

BEATITUDES CHURCH
555 W. GLENDALE AVE
BRITT CHAPEL

DEMONSTRATOR: KELLY SMITH
Pastels
6:00 P.M. Critique
6:30 P.M. General Meeting

Website address: <http://phoenixartistsguild.com>

For the newsletter: <http://phoenixartistsguild.com/news/htm>

Newsletters are PDF-formats - download free Adobe Reader, <http://get.adobe.com/reader/>

Remember to submit your pen and ink sketches to be featured in the newsletter.

Send new, updates and corrections to: Bets Doss email: betsdoss@aol.com

PLEASE PRINT NAMES, ADDRESSES, EMAILS CLEARLY!

The Newsletter needs QUALITY pen and ink sketches. We have talented, gifted artists in PAG and we need to show them off. Newsletter sketches reproduce best done in pen and black ink. The size should be approximately 5 1/2" x 3". They can be proportionally enlarged or reduced to fit the space better. Bring your sketches into be voted on for newsletter publication. Everyone, Please participate in this.

UPCOMING SHOWS

Church of the Beatitudes
555 W. Glendale Ave
Phx, AZ

Friday, April 13, 2012 - Sunday, April 29
Hours: 10 am-5 pm Monday-Sunday
Application due: Monday, March 26, 2012
Artists Reception: Friday, April 20, 6:00-8:00

Glendale Adult Center
5970 W. Brown
Glendale, AZ

May 2, - May 31, 2012
Hours: 10 am-5 pm Mon- Sat (closed noon Sat)
Application due: Monday, March 26, 2012
Artists Reception Friday, May 4, 5:00 - 7:00 pm

Directory Update

Changes:

BetteLou Tobin
1010 W. Solano Dr.
Phoenix, AZ 85013
Ph.

Mary Maul
14403 N. 60th St.
Scottsdale, AZ, 85254

Mikki Rideau Crawford (Lily)
1650 W. Glendale Ave
Unit # 4290
Phoenix, AZ, 85021

Victoria Lansing: email: lansingacctg@centurylink.net

New Members

Sharon Elliott
4845 E. Indianola Ave.
Phoenix, AZ 85018
Ph: 602-957-6422
whittlewomen@gmail.com
W/C, woodcarving

Grant Washburn
8378 W. Bluefield Ave
Peoria, AZ 85382
Ph: 623-215-7849
Photography
gwashburn2@cox.net

Jean Klein
2240 W. Cambridge Ave.
Phoenix, AZ 85009
Ph: 602-252-8401
email - azjmklein@q.com
oil on canvas

Ted Barkin
8314 N. 21st Dr. K202
Phx, AZ, 85021
Ph: 602-995-7335
robic3@cox.net

Janice Beals
14409 W. Peoria Ave
Waddell, 85355
Ph: 623-229-7625
adesignerstouch@mac.com

WELCOME TO ALL

Deadline for newsletter
articles is the 20th
of each preceding month.
Please comply.