



Phoenix Artists Guild

VOLUME 41

August 2011

President's Message

Welcome Phoenix Artists Guild members! This year will be the 27th Anniversary of the Phoenix Artists Guild. What makes PAG stand out from the rest? PAG continues to provide artists with what they want in a league. That is the foundation for PAG's success! PAG provides many artistic opportunities, including five exciting affordable Art Exhibits each year, and also a user friendly website at www.phoenixartistsguild.com, an electronic newsletter, a member's directory complete with show and meeting dates, deadlines, and a list of all PAG events and scheduled guest demonstrators. PAG's meetings are relaxed and geared towards our members requirements. Members have an opportunity to network with other artists in various art fields, to learn from experts, to use PAG's resources to grow in their own individual mediums or venture out to try something new. PAG members have multiple opportunities to get involved in committees, outreach programs, and Valley Art Shows and events at will. PAG's primary purpose is to create an artists family environment. A fun and energetic group of artists doing what they love. Involved in the appreciation of art, friendship, and unity! *Welcome back loyal members and welcome to all our new members...you picked the right group.*

PAG will start out the 2011-2012 year by again, being one of the sponsors for the Arizona State Fair. PAG artists will have the opportunity to sponsor the Fine Art Show Reception on Sunday, October 16, 2011, do volunteer hosting, and do demonstrations during the show. Be part of PAG's outreach program by volunteering for some or all of these artists' opportunities. If you are interested in any of these volunteer opportunities please contact me or any PAG Board member for more details. Give back to our community by being part of this wonderful endeavor. I encourage all of PAG's fine and talented artists to consider these great opportunities to promote fine art in Arizona.

The Arizona State Fair Fine Art information and applications now available at <http://azstatefair.com/Common/>

[Files/FineArt 2011.pdf](#). You can register on line or you may fill out the entry form and mail it in. Deadline is **Wednesday, September 14, 2011.**

The PAG board members are committed to providing its membership with what they want and need to enhance their artistic endeavors. PAG officers are dedicated and organized individuals whose purpose is to continue to build a better art group through feedback from its membership. Please don't hesitate to communicate your ideas or suggestions to the board members to help them accomplish the goal. PAG members are the "glue" that holds this group together.

Thank you PAG members.

I am so looking forward to an exciting PAG year...see you soon.

"Artist's make the world a beautiful world to live in".

PAG President

Maryanne Noli



"And The Livin' Is Easy" sketch by Patricia Alvillar

**Critique at 6:00, Business meeting 6:30, Monthly Demonstrator, Refreshments
Meetings are the 4th Monday each month - Guests are welcome**

website: <http://phoenixartistsguild.com>

Sean Kogan

Sean Kogan, our demonstrator this month, is the Vice President of Marketing for "Hall of Frames" Framing Center and Picture Gallery, He the son of the owners. It is a family business in which they take great pride. He will give us information on how to properly frame our paintings and artwork for deco and for show and teach us how to "do it ourselves." He has a dynamic personality and will address any questions we throw at him. He will also bring samples of framed work for show and tell as well as have some "hands on" instruction.

Their store not only does the framing, but also sells frames and materials to do your own framing. He will really be able to help those of us that "need to know." He is one of the people that helps make our artwork shine to it's best advantage.



Happy Notes

Monique Spinabella sold 2 paintings at Scottsdale Artist League "paint out" at the Desert Botanical Garden. **Jane Brown** sold a picture from the Beatitudes Show in April "White Flowers." **Dr. Carl Hoelle** sold a painting in the AAA show. **Jaxine Cummins** sold a large painting at the AAA show. **Ken Yabe** won 2 first place awards for a pencil portrait, a colored pencil rose, and a second place ribbon for a scratchboard with watercolor in the Maricopa County Fair. **Shakey Walls** says thanks for the help he received. Shakey designed the programs for the Beatitude Show and the Glendale Adult Show.

Alice Okoneski will assist **Julie Frye** with publicity. **Julie Gilbert Pollard** has 2 books listed in the July/Aug issue of *Artists Magazine*. "*Painting Cascading Water*" and "*Painting The Autumn Landscape: Watercolor Unleashed*." **Pat Gellenbeck** won the \$25 coupon to Arizona Art Supply for May.

Trevor Swanson donated 300 lbs. of clay to PAG. We thank him and really appreciate the gift.

Jeanette Sprague will be circulating a form for members to bring finger foods. You can chose the month you want to contribute. **Be a good member and sign up for this!**

Because we have such good electronic coverage and storage, (Thanks to **Chuck** and **Jaxine Cummins**), it has been determinded that we will no longer have a Historian or keep a yearly album. All that information is now on the web.

A new column is being created that will publish ads for our members. A 3" by 1" space will run for \$5.00.

Member Tribute

Carmen Timm



I am privileged to create the tribute to a very deserving artist and good friend, **Carmen Timm**. She has given unselfishly of herself to the Phoenix Artists Guild from the very first meeting she attended. Friendly and outgoing, she easily became part of the PAG "family." She continues to improve her skills by taking classes from the many qualified teachers available here in the Valley and her work continues to reflect this.

Born in Mesa, Arizona - one of very few NATIVES! She was raised in Gilbert in a large family (4 sisters and 2 brothers), a fifth generation ARIZONA family! She was schooled at Gilbert Elementary and Gilbert High School. In 1965 she married and moved to Germany to live with German Luftwaffe Pilot husband. She returned to Arizona in 1974.

While temporarily shelving her interest in painting she worked through Lamson's Business School, Glendale Community College, Ottawa University and graduating Cum Laude with a BA, and took some graduate classes at Western International University. She worked at Sperry/Honeywell from 1977 through 1994. After leaving there, she had a lot of spare time so she began taking watercolor painting classes at Hobby Bench and Paradise Community College, Glendale Community College, Washington Activity Center, Shemer, Beuf and a few private lessons. "Painting of any kind, watercolor, oil and acrylic are very therapeutic. I enjoy the camaraderie of the PAG, and Arizona Art Alliance." Carmen is an active member of both organizations, serving as program chairman for PAG, and as coordinator of workshops at the Arizona Art Alliance Gallery. She also creates beautiful jewelry items and other fine crafts with which she DECORATES PEOPLE! PAG is very lucky to have snagged this talented lady!

By Julie Frye



Quotes from Will Rodgers

1. Never slap a man who's chewing tobacco.
2. Never kick a cow chip on a hot day.
3. Never squat while wearing spurs.
4. There are two theories to arguing with a woman. Neither works.

Creative Corner

"UNDERSTANDING VALUE"

Elaine Waters

Value is the lightness or darkness of something. It is a relative term. Does something appear lighter or darker than something else? It is dramatically changed by the amount of light hitting the object. Often the color of an object will need to be painted with three (or more) values. One very light value of the color where the direct light is hitting, one middle value where the object is neither in the bright light nor in the shadow... and a darker value of the color where it is in shadow. It is very easy to stumble expressing the middle value. Remember now: We are talking value, NOT color.

Black and white photography usually shows these factors quite well,...and we can all say, "Oh yes, I understand that."

However, a painter using color...usually has more difficulty in identifying and matching values. When you paint two objects with close values next to each other, you usually need to change the value or color temperature at least where they meet...or the edges of one will barely be visible next to the other.

Questions to ask yourself:

How much darker is the shadow side of something that it is in the light? (Photos usually depict the value darker than it really is.) Is the light blue sky really lighter than the sun hitting on the charcoal colored roof? How much lighter or darker is the lake in your painting as compared to the sky? If the object is a true red, (barn) , how do I paint the sunny side and the shadow side? How light is too light and how dark is too dark? What do I use to lighten or darken the value of a color? There are two very good art tools to help you. One is the red acetate film which can help you identify the values in your painting. The other is a value matching tool graded from white to black.

Remember, your strongest value contrasts should always be at your center of interest or focal point and Color is not as important as Value!

Dear God,

I didn't think orange went with purple until I saw the sunset you made on Tuesday.

Margaret

From Kid's Letters to God

REMEMBER

Arizona Art Supply is awarding a \$25.00 gift certificate each month. Sign in at the door, it will be your ticket to win.

Slate of Officers

2011-2012

AUGUST INSTALLATION

President	Maryanne Nolti
1st Vice President	Carmen Timm
2nd Vice President	(Show Committee Board)
Recording/Corresponding Secretary	Monique Spinabella
Treasurer	Elaine Waters

Committees 2011-2012

AAA Representative:	Dr. Carl Hoelle
Artist of Month:	Carolyn Tolliver
Critiques:	Julie Frye/Elaine Waters
Mailing:	Jule/Larry Andrews
Membership:	Pat Gellenbeck
Newsletter:	Bets Doss
Photography/Web	Jaxine/Chuck Cummins/ Carmen Timm
Publicity:	Julie Frye
Social/Hospitality:	Jeannette Sprague/ Catherine Molla
Telephone Committee:	Roberta Richards/ Jane Brown
Ways & Means:	George Nelson/ Dr. Carl Hoelle

Our dear friend, Dick Phillips passed away last week. He was a stalwart friend of the PAG and one of the finest teachers ever. He was an enormous influence on the art community and his work inspired others for many years of his teaching and painting career. He will be sorely missed.

Phoenix Artists Guild

Glendale Adult Center May Exhibit 2011



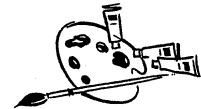
<u>Artist</u>	<u>Title</u>	<u>Medium</u>	<u>Price</u>
Alvillar, Patricia	Summer At The Lake Kona Beauty	HM-watercolor	\$395.
		watercolor	\$375.
Andrews, Larry	North Country On The Verde	HM- Acrylic	\$375.
		watercolor	\$200.
Baldwin, Joyce	Grampa's Afternoon Nap Mountain Stream	watercolor	\$175.
		water media	\$375.
Brown, Jane	Koi Pool "34" Morgan Strasa	3rd Place-w/c	\$300.
		watercolor	\$300.
Couturier, Cory	The Joy Of Friendship The Dance	3rd Place- Acrylic	\$1200
		Mixed Media	\$1300
Crowley, Linda	Charlie Sweet Bouquet	H/M- w/c	\$250.
		watercolor	\$150.
Crawford, Mikki	The Puzzle The Cat	HM w/c	\$400.
		Acrylic	\$600.
Cummins, Jaxine	Asian Peaches Some Like It Hot	1st Place- Acrylic	\$400.
		Acrylic	\$400.
Dando, Helen	3 Boats Southern Charm	1st Place Pastel	\$400.
		Pastel	\$400.
Doss, Bets	Fiesta Sweet Sioux	3rd Place-Oil	NFS
		Pastel	\$400.
Failla, Nina	Serendipity Banana Tree	1st Place m/m	\$400.
		2nd Place w/c	\$500.
Frye, Julie	Lava Fantasy Surf's Up	Acrylic	\$950.
		Acrylic	\$650.
Gellenbeck, Pat	Olden Times Evening Ride	watercolor	\$400.
		Acrylic	\$400.
Henry, Eleanor	Lakeview Mountainview	2nd Place Pastel	\$350.
		Pastel	\$350.
Higgins, Ann	"Best of Show" A Grand Evening	Oil	\$150.
		Oil	\$150.
Hoelle, Carl	Meandering River Spirit Flower	Oil	\$150.
		2nd Place m/m	NFS
Isham, Ruth	Floral Fantasy Cranberry Glass and Roses	HM w/c	\$125.
		Oil	\$150.
James, Maxine	Tuscany Vista Coming Home	1st Place - Oil	\$300.
		Oil	\$350.
Jonas, Shirley	Uno Rosa (One Rose) The Arabian Ready To Show	HM w/c	\$95
		1st Place Graphite	\$250
Kohn, Jean	Kiabab Muley Pekinese Persuasion	graphite	\$200
		Digital Art	\$350
Mansour, John	Shepard's Shelter Magnolia 'N Lace	2nd Place Acrylic	\$355
		watercolor	\$250
Martin, Yolanda	Whispering Flight To Mexico	watercolor	\$180
		watercolor	\$180
McIlvain, Clarice	2 Pink Tulips Theo	3rd Pastel	\$500
		Pastel	\$399
Miller, Marilyn	Samantha Sunny Treasures	Oil	\$350
		watercolor	\$150
Molla, Cathern	Animals Of Africa Last Supper	3rd Place wood	\$2000
		wood	\$1200
Morgan, Jean	Hat, Rope & Spurs Peaceful Duck	HM photography	\$300
		Photography	\$300

Okoneski, Alice	Apple Pie To Be	watercolor	\$250
	Space Bubbles	watercolor	\$250
Roberts, Silvia	Aspen In September	watercolor	\$125
	Still Life With Guitar	graphite	\$100
Sandera, Paula	That's The Way It Was	graphite	\$175
Searles, Nancy	Sunshine On The Patio	HM watercolor	\$250
	Main Street Beacon	watercolor	\$500
Soares, Laila	Gotland Blue Bells	1st watercolor	\$125
	Sunset On The Baltic Sea	watercolor	\$125
Sprague, Jeannette	Desert Wash	Oil	\$120
	Canyon Lake	Oil	\$345
Timm, Carmen	We Three	HM watercolor	\$150
	Floral Affair	watercolor	\$150
Tolliver, Carolyn	Iris And Company	HM watercolor	\$350
	Metal Works	watercolor	\$250
Waters, Elaine	Desert Boulders	2nd Place oil	\$250
	Alyska Summer	Oil	\$400
Wordsman, Virginia	Toytown	HM watercolor	\$400

Dr. Hoelle, Carl won Best of Show for "A Grand Evening"
George Nelson won Peoples Choice Award

w/c = Watercolor
 HM = Honorable Mention

MM = Mixed Media
 NFS = Not For Sale



Juror's Statement:

First, thank you for inviting me to jury your exhibition. I enjoyed the experience especially when I found out all I had to do was give awards. I enjoy looking at art and those involved in the creative process. It is hard for me to judge harshly those who are pursuing what they love to do. I once expressed, "Those who can - create, those who can't - curate and everybody is a critic." As a juror you take on the last two roles. (I'd rather be creating.) When evaluating art I look for three criteria, (1) skill of media (technique), (2) inventiveness (originality of idea) and (3) balance (this can be balance of design, color or both.) When all of these come together...it's great. All of the pieces that received awards, including honorable mentions, displayed at least one of these, many two and some all three. (Others that didn't get ribbons displayed some of these qualities also.) some who got honorable mentions were in the running for a higher place (it was hard to decide.)

In "A Grand Evening" Dr. Carl Hoelle's originality was scale. Grand can mean large, but the grandeur was displayed in a small piece. It also had balance of design, color and showed his skill as a painter.

Something to keep in mind is that all judging of art is subjective. What I chose might have been different from another's choice. When I began entering my work in exhibits I put 3 paintings before one jury and all were rejected. I entered the same three in another juried exhibit and got 1st place in painting. This gave me perspective to not take it too hard.

Thanks again, Larry Willis

www.phoenixartspace.com/larrywillis

Birthdays

June

Larry Andrews June 26
 Catherine Molla June 16



July

Kristi Brown	July 17	Monique Spinabella	July 27
Iva Cohen	July 26	Carolyn Tolliver	July 18
Linda Crowley	July 30		
Maxine James	July 14	Aug	
Shirley Jonas	July 2	Vickie Armstrong	Aug 12
Jean Kohn	July 25	Joyce Baldwin	Aug 12

**Always too soon to quit
 Never too late to start.
 Anonymous**

**A smile of encouragement at
 the right moment may act
 like sunlight on a closed up
 flower; it may be the turn-
 ing point for a struggling
 life.**

Arthur Unknown

Arizona Art Alliance

Dr. Carl Hoelle

The Arizona Art Alliance

10810 North Tatum Blvd. #102-264

Phoenix, AZ 85028

GALLERY AT THE PAVILLION AT TALKING STICK

9011 E. INDIAN BEND RD., STE E-1

SCOTTSDALE, AZ



COURTYARD MARRIOTT HOTEL EXHIBIT (Mayo Clinic campus Shea Blvd., Scottsdale.) The current exhibit cycle has been extended to a 6 month cycle with the current exhibit scheduled to end on August 29th. With the Phoenix Artist Guild's purchase of an ad for the 2011 Holiday Show brochure, we are eligible to show 2 pieces of artwork at the hotel. A lottery drawing of juried artists was held and the winners will be announced at our August meeting. The artwork pieces are scheduled to be delivered to Al Arne at the hotel the morning of August 29th, to be on exhibit through February 2012 (or earlier if sold!)

GALLERY CYCLE Cycle #7 for juried artists will return to a 2 month showing September 28th through November 27th. Information re costs, how to apply, and deadline for application materials, is available at www.azartalliance.com.

HOLIDAY EXHIBITION The Alliance Holiday Show for juried artists is scheduled for November 30th through December 23rd. It will be held at the Alliance Gallery with show dates December 1st thru 4th, December 7th thru 11th, and December 14th thru the 23rd. Show hours are 10am-5pm. Artists Reception will be December 3rd, 7-9pm. Panel sides, floor or table space cost remains at \$50 each. For current nonjuried artists desiring to show, the next jurying deadline is September 30th, with those juried in able to show in the Holiday Exhibit. Please let me know if you successfully become juried so I can include you in all relevant email (and mailed if no computer) information relevant specifically for juried artists.

I will need a preliminary panel side/floor or table space count from those wishing to participate by October 15th. By November 9th I will need rental fees in check made out to the PHOENIX ARTISTS GUILD (not to the Art Alliance.) In addition, I will need a completed Volunteer Signup Sheet by that date. On the date of Artwork delivery &/or hanging, you will need to bring also the signed and completed Hold Harmless/Inventory/Statement of Originality Form and give it to me at the Gallery. Failure to get the check and Volunteer Signup Sheet to me by the November 9th date may result in non-participation in the show.

I will have available all needed forms for the show including the Holiday Show Prospectus, Hold Harmless/Inventory/Statement of Originality, and Volunteer Signup Sheet at our August 22nd meeting. Information and forms for the newly

designed Artist Fun Shop are currently in process but should be available also at the August 22nd meeting. In addition, I will have available Applications and Judging Criteria for the jurying process at that meeting. All forms also will be available at www.azartalliance.com.

Dr. Carl Hoelle

AAA Representative



Ways and Means

George Nelson is our new co-chairman of Ways & Means table, also known as The General Store.

He thanks you for all your previous donations. We are now starting a New Year, and he would like to remind you to keep on donating your new surplus and gently used art related items. It is so appreciated by the Guild.

Remember the \$5.00 "funny money" drawing. It may only be applied to the purchase of donated merchandise at the Ways & Means table. **PAG FUNNY MONEY MAY NOT BE USED TOWARDS RAFFLE ITEMS OR ANY OTHER PAG FUND RAISING PROJECTS OR FEES.** It must be redeemed for donated merchandise only the same night of the PAG General Meeting, no change or credit will be given, and may not be applied towards any other venue sponsored by PAG, (fees, raffle tickets, membership dues, etc).

George Nelson - 602-246-8373

Dr. Carl Hoelle - 602-274-1699

Get "Linked" on the PAG Website

Promote YOU AND YOUR ART FOR
MORE WORLDWIDE VISIBILITY

1. Be a member of Phoenix Artists Guild.
2. Pay just \$25 for a Full Year link. Send check to Elaine Waters, PAG Treasurer, 2330 W. Mandalay Ln. Phoenix, AZ 85023.
3. Send a JPEG image; (prepare-crop-size, and save it as a 300+dpi JPG image). include name of piece, size, media used; (pricing optional, have them contact YOU, so you may negotiate!)
4. Email to **Chuck Cummins**; Chuckc@lincum.com your JPEG image; contact information; name of organization(s) to which you belong, and your contact info; (name, email, and website addresses); we do not recommend including your phone or home address.
5. If you have your own website, please link **BACK** to <http://www.phoenixartistsguild.com/Links.htm>. This makes links more favorable to Google and other search engines.

MEETING NOTICE
August 22, 2011

BEATITUDES CHURCH
555 W. GLENDALE AVE.
BRITT CHAPEL

DEMONSTRATOR: SEAN KOGAN
Vice President Mkt. "Hall of Frames"
6:00 P.M. Critique
6:30 P.M. General Meeting

Website address: <http://phoenixartistsguild.com>

For the newsletter: <http://phoenixartistsguild.com/news/htm>

Newsletters are PDF-formats - download free Adobe Reader, <http://get.adobe.com/reader/>

Remember to submit your pen and ink sketches to be featured in the newsletter.

Send news, updates and corrections to: Bets Doss email: betsdoss@aol.com

PLEASE PRINT NAMES, ADDRESSES, EMAILS CLEARLY!

The Newsletter needs QUALITY pen and black ink sketches. We have talented, gifted artists in PAG and we need to show them off. Newsletter sketches reproduce best done in pen and black ink. The size should be approximately 5 1/2" x 3". They can be proportionally enlarged or reduced to fit the space better. Bring your sketches in to be voted on for newsletter publication. I hope everyone participates in this.

UPCOMING SHOWS

**Arizona State Fair
North Hall Coliseum**

Az State Fair information & application form is available at: <http://azstatefair.com/entries> **Deadline: Wednesday, Sept 14- 2011 entries due at hall, Sept. 24, 25, 26, 8am to 6 pm**

You can register on line or fill out entry form and mail it in. PAG will again be a sponsor and PAG artists will have an opportunity to sponsor the **Fine Art Show Reception on Sunday, Oct. 16, 2011**. And they also may do volunteer hosting, and demonstrations during the show.

North Hall is closed Mondays & Tuesdays
Entry Fees: \$8.00 each.

Fall AAA Exhibit Juried PAG Artists - Dec, 1 through 23rd
Art Alliance Gallery
Scottsdale Pavilion
9079 Indian Bend Road SuiteE-1 (101 & Indian Bend)



Directory Update

Linda David
P.O. Box 11444
Glendale, AZ 85318
Phone: 523-889-4503
artingrained@live.com

Kaye Klien
5521 E. Dahlia Dr.
Scottsdale, AZ 85254
kayeklien@gmail.com
Phone: 602-494-4007
w/c

Christine Oliver
30001 E. Vista Dr.
Phx, 85022
Phone: 602-992-8022
rtocro@msn.com
acrylic, w/c

June Martin
4521 N. 14th Place B
Phx, 85014
w/c, pencil, fresco
jbuzss@yahoo.com



The **Mystery Members** for PAG year 2010-2011 are:
Aug/10-Pat Gellenbeck, Sept/10-Suzi Cooper, Oct/10-Toni Hungerford, Nov/Dec/10-Jeanette Sprague, Jan/11-Carmen Timm, Feb/11-Ann Higgins, Mar/11-Nina Failla, Apr/11-Alice Okoneski

The members contributing to our hugely successful "pot painting" and sale are: BetteLou Tobin 5, Bets Doss 3, Ginnie Wordsman 2, Jeanette Sprague 2, Joyce Baldwin 2, Patricia Alvililar 2, Ann Higgins, Carmen Timm, Carolyn Tolliver, Catherine Molla, Jane Brown, Jaxine Cummins, Jean Morgan, Laila Soares, Maryanne Noli, Monique Spinabella, Pat Gellenbeck, Silvia Roberts. At \$10.00 each, we sold 25 pots!

We were saddened to hear that one of our former members, Novella Jamison, passed away On July 3rd, 2011. She was President Of PAG in the year of 2004-2005. We will miss her.

Dues are due and payable - now!