



# Phoenix Artists Guild

VOLUME 22

APRIL 2009

## Susan Falcon-Hargraves

Born and raised in New York City, **Susan Falcon-Hargraves** attended the New York School of Visual Arts, but was bitten by the "dance bug" early in her studies there. Invited to study dance at the prestigious Julliard School, she instead chose to join a professional company that was started by a teacher at the Martha Graham School. As an actress, she was singled out for small roles in Hollywood films, such as *Boyz in the Hood*, and received critical acclaim as well as critic's awards for her work in various Los Angeles theatre productions.

Susan resumed her fine arts involvement in Arizona, where she earned a B.A. from Prescott College. In a scant five years, she has carved out an artistic niche in the Valley, winning top awards at juried shows. In 2007 the City of Glendale purchased the "Elephant in the Room" from her *Eccentricities* series, and she was selected as Phoenix Magazine's Artist of the Month for the March issue of 2008. In March of 2009 she won a place in the top ten of the ARTROM Gallery TOPTEN Women in the Arts International Art Competition.

In the spring of '08 she presented a one-woman show at the West Valley Art Museum, titled "Dreams and Totems" and her work was prominently featured at the Arizona Museum for Youth show entitled "Table Manners" which ran

through September of 2008. The MFY curator's statement kindly cited her work as the inspiration for that show. Susan Falcon-Hargraves teaches at the BRIO Fine Arts Center in North Scottsdale.

### Artist's Statement:

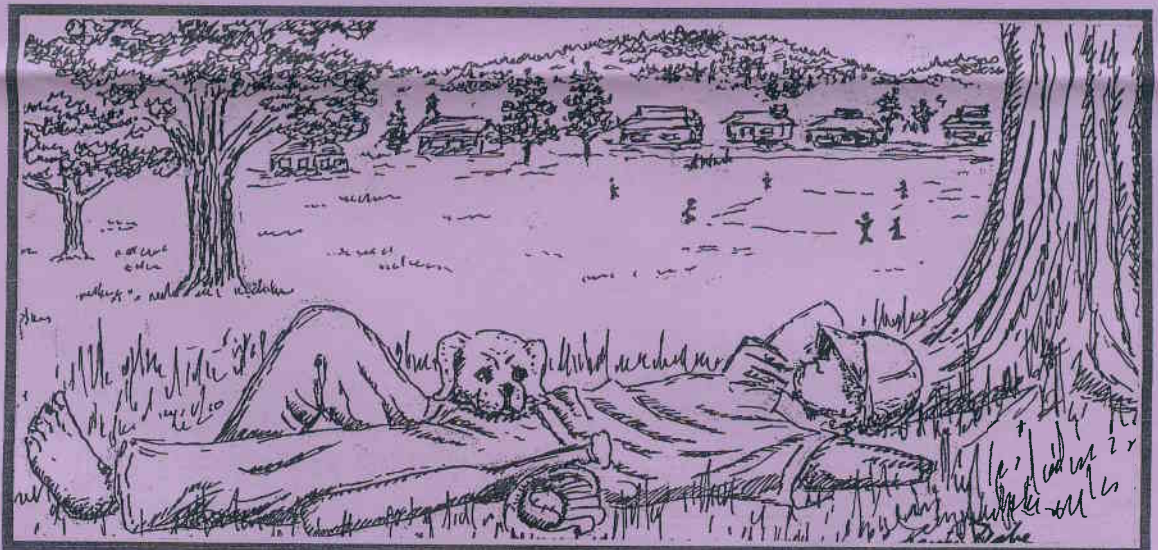
I've always been fascinated with the unsolvable mysteries that certain old photos present, particularly those that seem to hint at an unspoken social or emotional dynamic among several figures, or a subtext of thought within a single figure. These castoff moments of real or imagined drama provide the inspirational color to generate some sort of private narrative in the viewer's mind, often exploring the quieter and more contemplative elements of the bizarre.

My goal has always been to take the viewer beyond the image to reveal something of the unique spiritual essence of the subject, to expose something of the extraordinary within the ordinary. The dream within a moment of daily life, or perhaps the surreal in what appears to be a realistic setting. More and more often lately I find that these essential elements insist on manifesting themselves in the form of stray wildlife or totem animals.

[falconhargraves@mac.com](mailto:falconhargraves@mac.com) or  
[www.falcon-hargraves.com](http://www.falcon-hargraves.com)

Sketch by  
Ken Yabe

Artist of the Month:  
March  
Monique Spinabella



NEW MEETING NOTICE! - 6:00 PM FOR CRITIQUE. GENERAL MEETING AT 6:30



## President's Message

We were all very intrigued with our demonstrator, **Bob Coonts**, and his style of art. The shapes and colors he uses in his creations are so interesting and different, a person could spend hours looking at his work. Bob, thank you for the interesting demonstration.

**Monique Spinabella** was chosen Artist of the Month for March. She brought in a very nice oil painting of her dog. Congratulations Monique.

The **Phoenix Artists Guild** was well represented this month with members showing at **Peoria City Hall Show** and the **Arizona Art Alliance Show**. Thank you to all our members who entered works in both of these Shows.

April will be the last chance for one of our members to hold the title of "Artist of the Month". In May, all of the artists chosen for artist of the month will bring in their winning work or another work, if they have sold the winning work, and we will vote for an "Artist of the Year". This monthly event is a nice way to recognize all of you and give you a chance to show your finished works. Artist of the Month runs from September to May, any member of **PAG** may enter a finished/framed work to be voted on. If a member is chosen artist of the month, they will not be eligible to enter another work, under that title, until September of the following year. Thank you for supporting this part of our monthly program.

The Summer Show at the Glendale Adult Center has not been firmed up as of yet. I hope to know about this show opportunity by the end of April.

Three of our members have been chosen to participate on April 18 in the Berridge Nursery "**Art in the Garden**" show. If you are interested in showing your work, the public relations firm representing the nursery for "Art in the Garden", will start interviewing new artists for the 2010 Show in January. The Rose is the theme for this year, and demonstrations in the nursery will be on the care/trimming of roses. Thank you for participating in all of our **PAG** events.

PAG President,  
**Carolyn Tolliver**



## Mystery Member

Grew up in New Jersey  
Wrote scripts for Television Programs  
Painter and \_\_\_\_\_ Artist

## Other News

**Julie Frye** is recovering from a badly broken ankle. The surgery required a plate held in place by 5 screws and a pin. It is exceeding painful and getting around is a struggle. She wishes to express her thanks for all the cards, food and prayers she's received and is so grateful for her **PAG** family.

**Carmen Timm** will be going in for knee surgery on the 25th. Good luck and a speedy recovery to you Carmen and Julie.

## Member Tribute

Earlene S. Ford

**Earlene S. Ford** came to Arizona from Illinois where she was a high school art teacher. She was an active member in the **Valley Artists League** and after that organization disbanded she joined **PAG** in 1986. **Earlene** has devoted many hours to the benefit of **PAG**: serving as publicity chairman she diligently sent notices of our shows to newspapers, magazines, TV stations and radio stations. Attendance at our exhibits grew each show and sales were good as a result. **Earlene** also served many years as historian, took many photos and spent countless hours preparing scrapbooks of our many activities. Health problems arrived and **Earlene** had to drop out of **PAG** but she is now **BACK!** Feeling better and eager to see her many friends. **Earlene** donated the beautiful costume jewelry that **Larry** has been selling at the **Ways and Means** table. Although she is unable to paint any longer due to macular degeneration, she is still an avid and enthusiastic member. She loves visits and phone calls and loves to "talk art" with her friends. It's an honor to have you as a member. Welcome back!

**Monique Spinabella** won "Artist of the Month" for March for her portrait of her dog.

## Creative Corner

"Painting From Your Heart"  
By Elaine Waters



Years ago when I asked a very fine artist friend, what I was missing in my oil paintings, she said, "don't just paint a pretty picture."

Plan ahead by asking yourself, "Why am I going to paint my chosen subject?" What excites me about doing the painting? What is the single most important thing I want to say? How can I paint this painting so that the viewer will know the answers?"

Many times, even competent artists forget to think about these very important questions and therefore, when they are finished, they may have a "pretty picture," but the painting says little because the artist never took the time to think about why they were painting that particular painting.

Art class students often have this problem because they copy other artists' published works, or they are faced with quick decisions about what to paint in class for that particular day... Almost any painting from a personal resource photo will be more spontaneous and exciting than copying some other artist's work.

As an artist, enjoy the process of painting, have fun playing with the color mixtures, paint what is in your heart and mind, strive to make your work individual, and be excited about your paintings.

## Arizona Art Alliance

Dr. Carl Hoelle

The Arizona Art Alliance  
10810 North Tatum Blvd. #102-264  
Phoenix, AZ 8502



The Art Alliance has revamped its website and invites interested artists to view it. Log onto [www.azartalliance.com](http://www.azartalliance.com).

In the Alliances effort to improve its representation to the general community and its four thousand or so member organizations' artists, beginning in January of this year the Alliance began a collaborative workshop-type endeavor with help from a representative of the Phoenix Arts and Business Council and a group of volunteer artists from several AAA member organizations. The overall mission is to project what the AAA should look like and "become" in six or so years, and processes as to how to get there. As information from this endeavor is disseminated, it will be made available to all member artists organizations.

Dr. Carl Hoelle  
AAA Representative.

### Happy Notes

Larry Andrews is inviting us all to his 3rd annual one man Art Show at **Grinders Coffee House, 17 E. Dunlap, Ste. 2** located at the S.E. corner of Central Ave and East Dunlap in Phoenix. The show opens on **Saturday, April 3rd at 7:00 pm**, and it will last through the month of April. Larrys' Artists Reception, **7-9 April 4.**

Elaine Waters wants to remind **JB** artists that the next changeover will be **Thursday, April 23, at 2:00 pm**. One painting has sold so far during the current exhibit period. Thanks to all who are participating!

Elaine Waters received a Certificate of Merit at the recent Arizona Art Alliance exhibit in Peoria for her "plein air" painting "East Verde River". Elaine will also take part in the "Art in the Garden" day at Berridge Nursery.

Jane Brown received an Honorable Mention in the AAA Celebration of Artists for her watercolor titled "Grapes."

Alice Okoneski won an Honorable Mention for her "Sunflower Drama" in the Peoria City Hall show.

Maryanne Noli won a 1st Place Blue Ribbon in the Peoria Festival for her "Vatican Series" in photography.

Monique Spinabella won a Merit Award at the AAA show for her oil entitled "Seti II." And an Honorable Mention at Peoria City Hall for "Ramses" in oil.

Ken Yabe won 2nd Place for "Unity in Faith" in pencil, and an Honorable Mention for "Suspicion" in scratchboard at the Peoria Celebration of Artists Show.

## Slate of Officers

2009-2010

PHOENIX ARTISTS GUILD

PRESIDENT.....Carolyn Tolliver

1st VICE PRESIDENT..... Carmen Timm  
(Program Chairman)

2nd VICE PRESIDENT.....PAG Board  
(Show Chair)

RECORDING/CORRESPONDING  
SECRETARY.....Ann Higgins

TREASURER.....Elaine Waters

NOTE: Election will take place at the April meeting. Nominations from the floor will be recognized.

If you have a candidate for office, please talk to the person beforehand to be sure that they are willing to fulfill the elected duties.

RESPECTFULLY SUBMITTED  
Julie Frye, Chairperson

### From the Website

Yolanda reports she'll be handing over the website at the end of May. The hours she has spent creating and maintaining our site are too countless to put a number to. Each event, each member and many paintings from our shows have been available to members and strangers alike, increasing interest both outside and within the group. During the summer hiatus it will undergo changes and revisions, all made easier because of the prior work already accomplished. We really appreciate her getting us started on this valuable exposure for our members and their art.

**THANK YOU, YOLANDA!**

<http://phoenixartistsguild.org>

Yolanda also wants to thank the Guild for letting her be the WebArtiste for the last 2 years. She has enjoyed it.

Membership forms are included in newsletter. Please fill out and remit with check as soon as possible.



**MEETING NOTICE  
APRIL 27, 2009**

**BEATITUDES CHURCH  
555 W. GLENDALE AVE.  
BRITT CHAPEL**

**APRIL 27, 6:00 - CRITIQUE  
6:30 P.M. BUSINESS MEETING  
DEMONSTRATOR: SUSAN FALCON-HARGRAVES**

**Park in the main parking lot accessible on 7th Ave.**

**NOTICE TIME CHANGE FOR MEETING!**

**Remember to submit your pen and ink sketches to be featured in the newsletter.**  
**Send news, updates and corrections to: Bets Doss email: betsdoss@aol.com**  
**PLEASE PRINT NAMES, ADDRESSES, EMAILS CLEARLY!**

Newsletter sketches reproduce best done in pen and ink. The size should be approximately 5-1/2" x 3". Then it can be proportionally enlarged or reduced to fit the space better. Bring your sketches in to be voted on for newsletter publication. I hope everyone participates in this.



**Upcoming Shows**

**SPARK**

**IGNITING THE POWER OF ART  
SCOTTSDALE ARTISTS' SCHOOL**

Fundraising Event \* Saturday, April 18, 2009  
5 - 7:30 PM \* Call (480) 990-1422  
To benefit Scottsdale Artists' School  
3720 Marshal Way, Scottsdale, AZ 85251  
Call (480) 990-1422 for details.

**Shemer Art Museum**

March 10 until April 21st.  
5601 E. Camelback

**Westside Arts Council**

Will allow AAA members to participate in revolving juried show for a certain amount of time. No charges except \$5.00 photo commission. Good show for large paintings.

**BERRIDGE NURSERIES**

**"ART IN THE GARDEN"  
Saturday April 18 9AM-3PM**

There is a few more artist openings, which this year will focus on roses, as the nursery is packed with these. They are searching for artists with a focus on floral themes and other complimentary themes in the garden. Artists will be there at 8 a.m. and staffing their booth full time is at the discretion of the artist.

Contact **Mallory Loring** at [mloring@gcjr.com](mailto:mloring@gcjr.com) or **Christine Walton** at: [cwalton@gcjr.com](mailto:cwalton@gcjr.com). They can also be reached at **602-274-1988** to accept applications. Please contact them to submit a portfolio and/or web site link. Artists will be chosen by the event coordinators.

**Mystery Member for March was Bets Doss**

**PLEASE PRINT NAMES, ADDRESSES,  
EMAILS CLEARLY!**

**New Members/Changes**

**Joe Soltis**

13435 N. 37th Dr.  
Phoenix, 85029  
Phone 602-843-1268  
Oil, W/C  
Sorry Joe

**Luis A. Salazar**

345 W. Lewis Ave.  
Phoenix, 85003  
Phone 602-252-2519  
LSAL2T5@aol.com  
Photograph

**Shakey Walls**

Cell - 602-361-8700



**Ways and Means Report**

And again, be sure and check out the "Ways & Means" Bargain Table! Many new items! Great buys on near new Frames, (he has lots of these), Art Books, Jewelry and other miscellaneous items. If you have anything that is Art related and in good condition and you would like to donate it to P.A.G.'s Ways & Means Table, it would be greatly appreciated. Free pick-up if needed - call Larry at 623-939-0442.

**Ways & Means Chairman**

**Larry Andrews,**

**April Refreshment Volunteers**

**Cookies:**

**Ruth Cohen/**

**Clarice McIlvain**

**Fruit:**

**Monique Spinabella**

**Relish/Veggies:**

**Char Howey**

**Cheese/Crackers:**

**Shakey Walls/**

**Alice Okoneski**